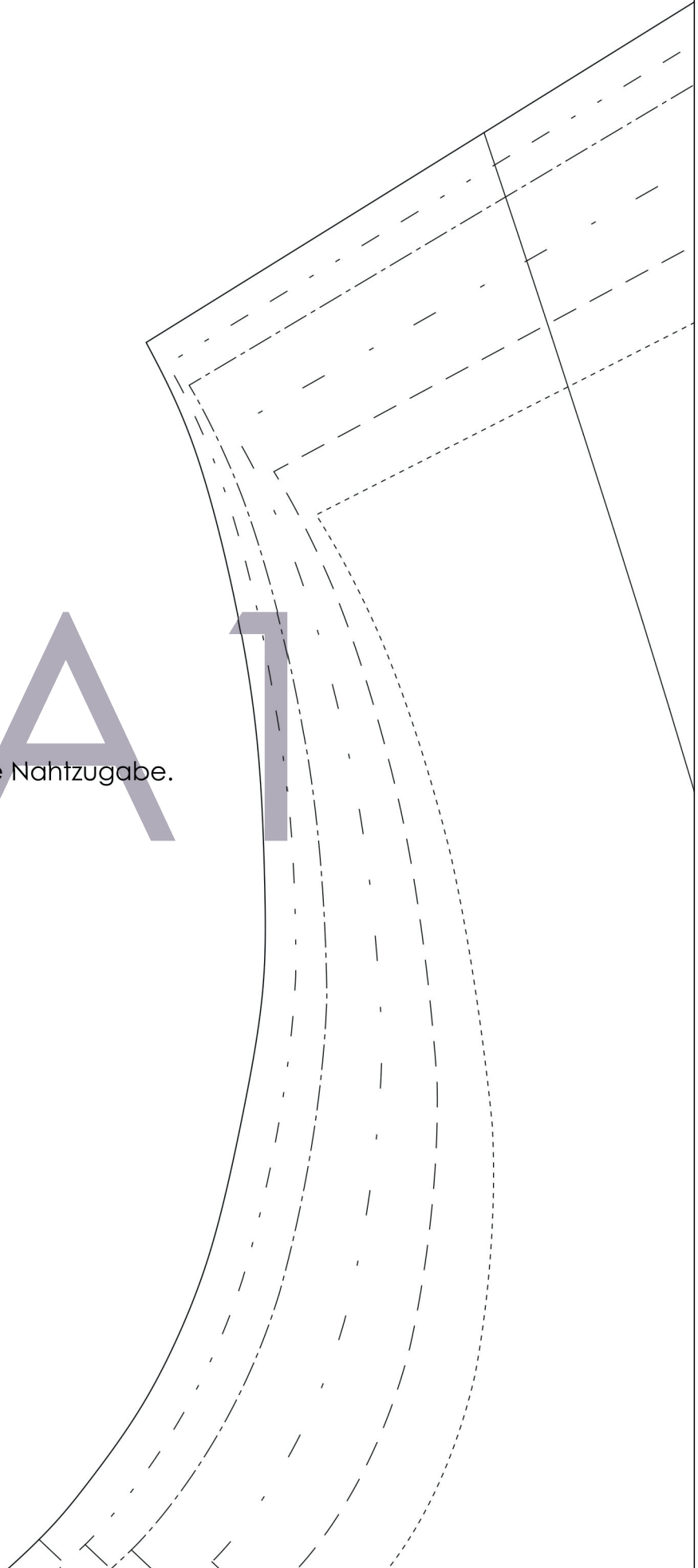
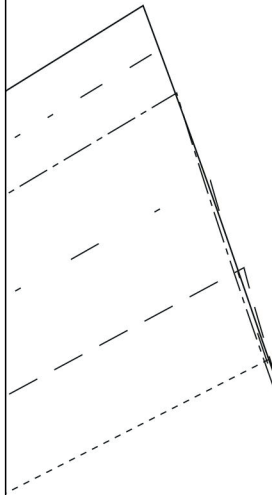


—————	46
.....	44
-----	42
-----	40
-----	38
-----	36

Das Schnittmuster enthält keine Nahtzugabe.
Seam allowance not included.

A 1



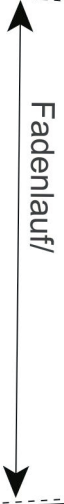


46
44
42
40
38
36

A2



SS



A3

Hemmers Itex
fabrics for your creativity

BIRTE DR

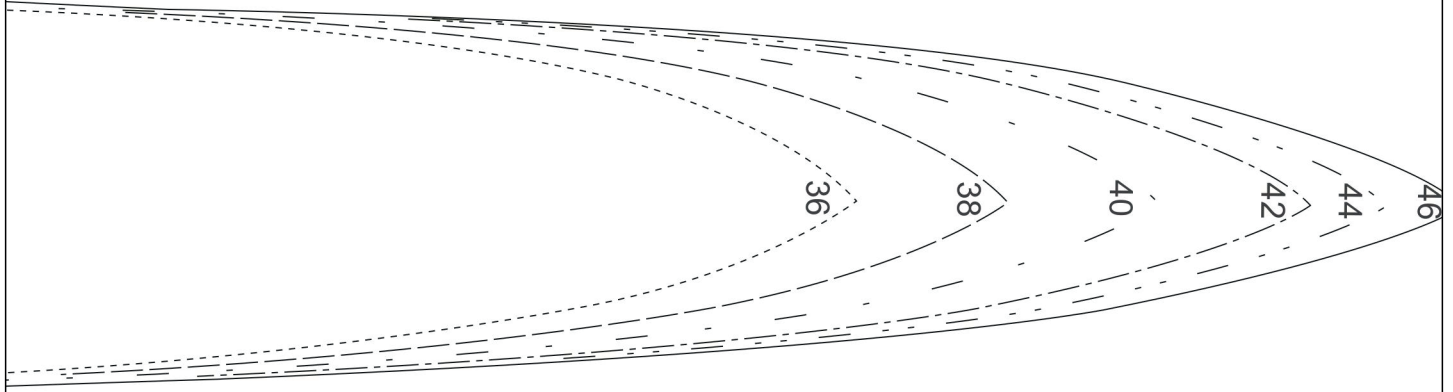
E

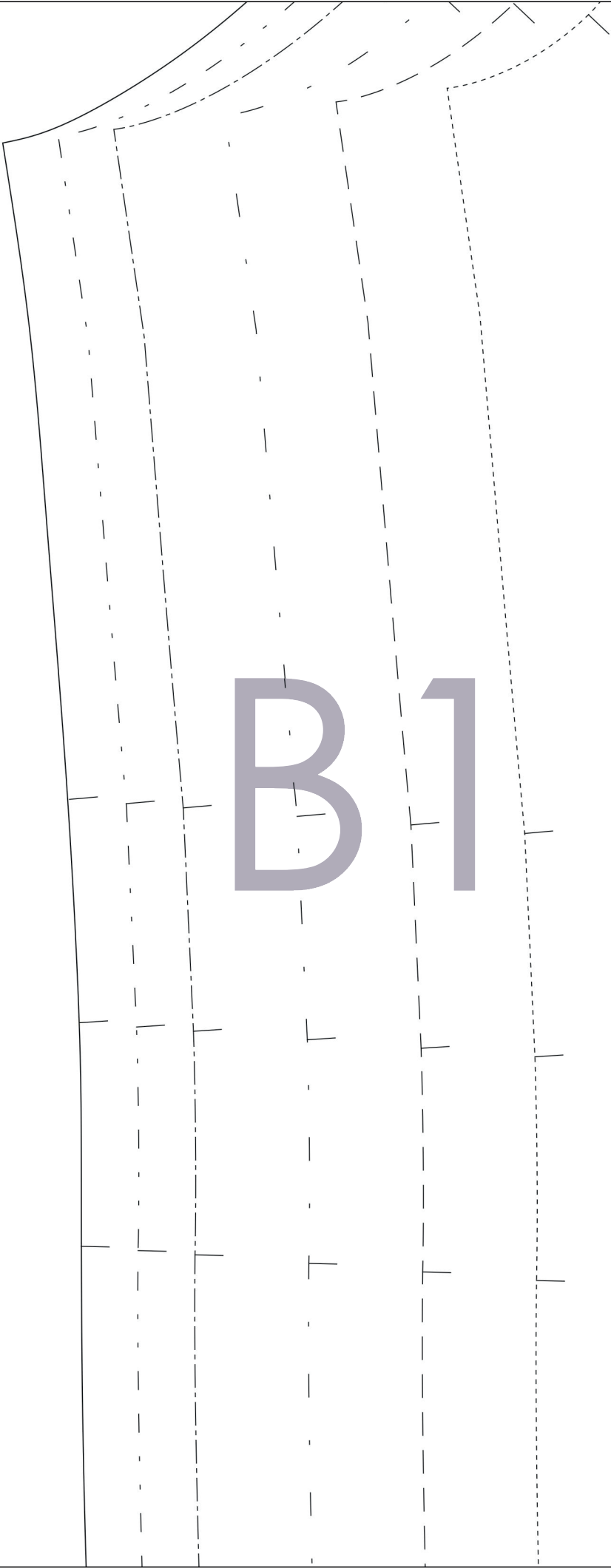


ESS

Stoffbruch / Fadenlauf

A4





B1



Fadenlauf / Straight grain

B2

BIRTE DRESS

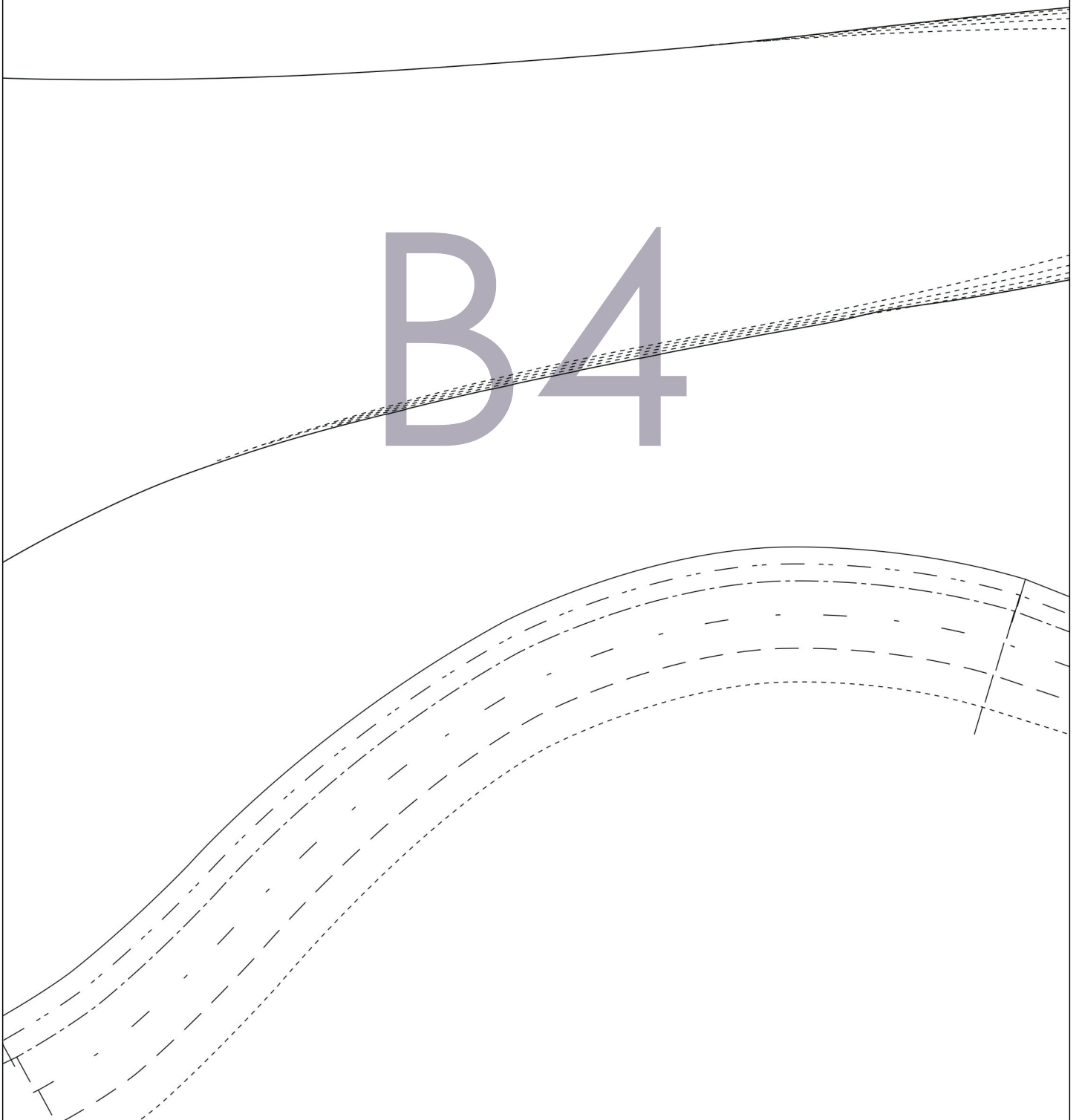
A

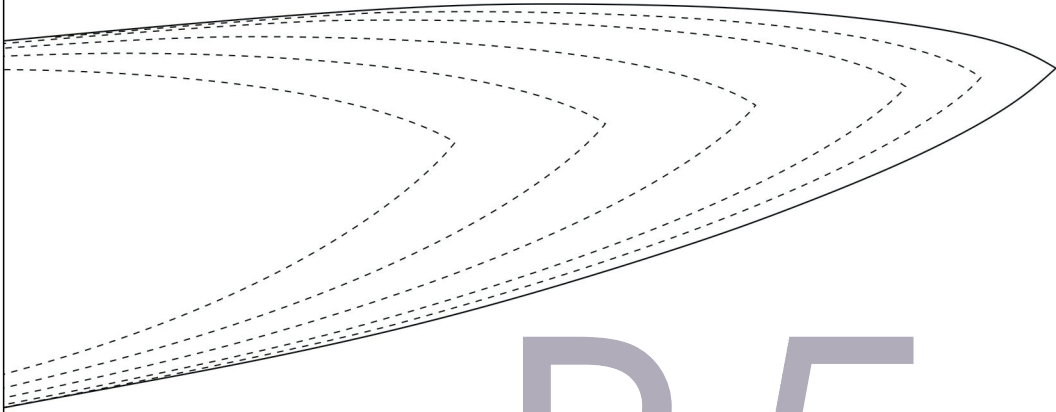


A technical drawing of a curved surface, possibly a part of a mechanical component. The drawing is enclosed in a rectangular frame. The top edge is a solid line that curves downwards from left to right. A small tick mark is located on this curve. The bottom edge is also a solid line that curves upwards from left to right. A small tick mark is located on this curve. In the bottom right corner, there are dashed lines representing hidden or projected features. The text 'B3' is centered in the middle of the drawing.

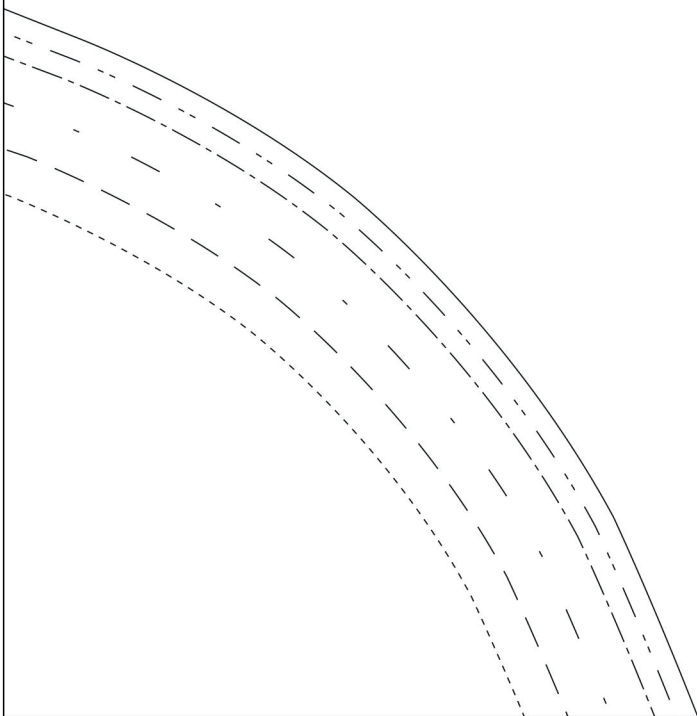
B3

B4





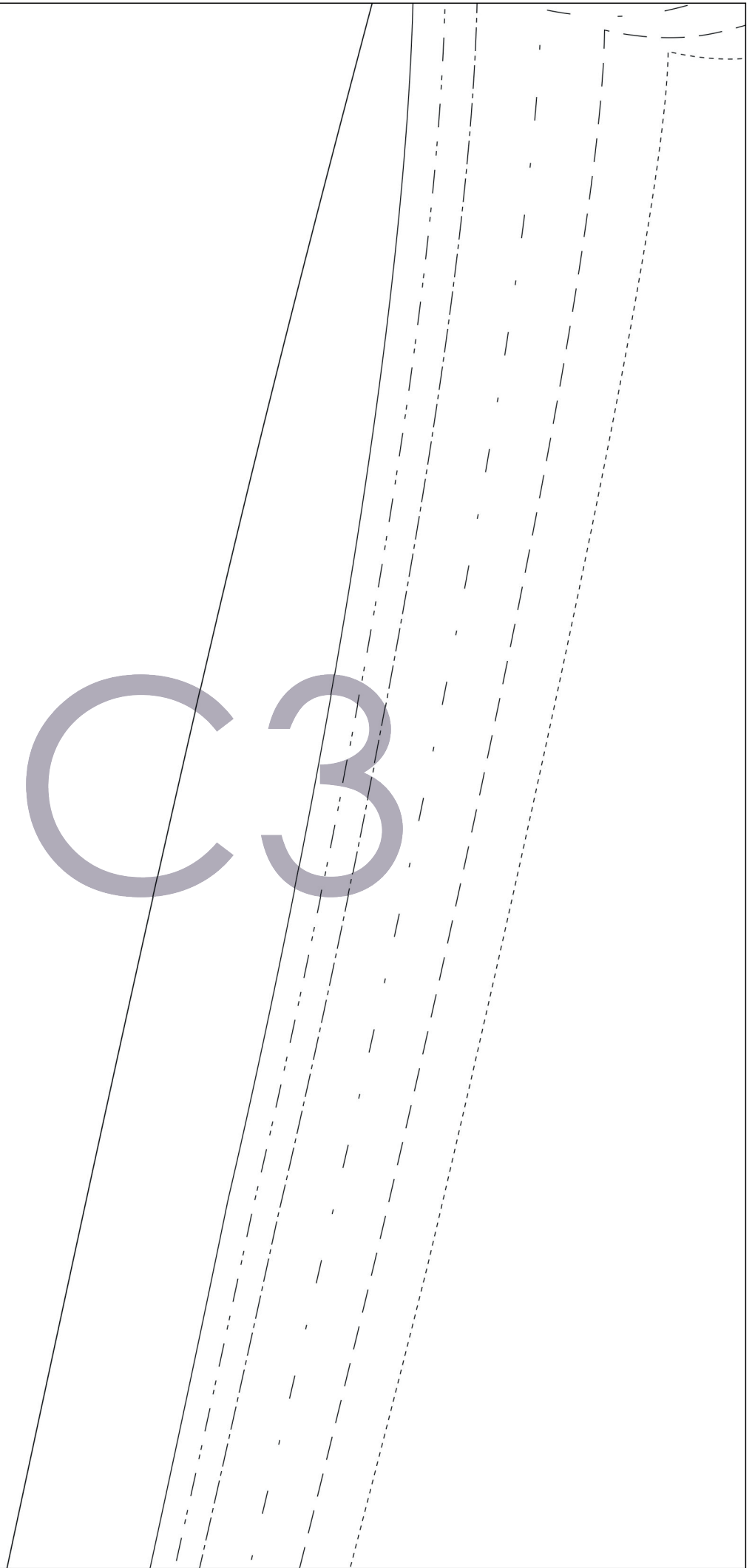
B5



C 1

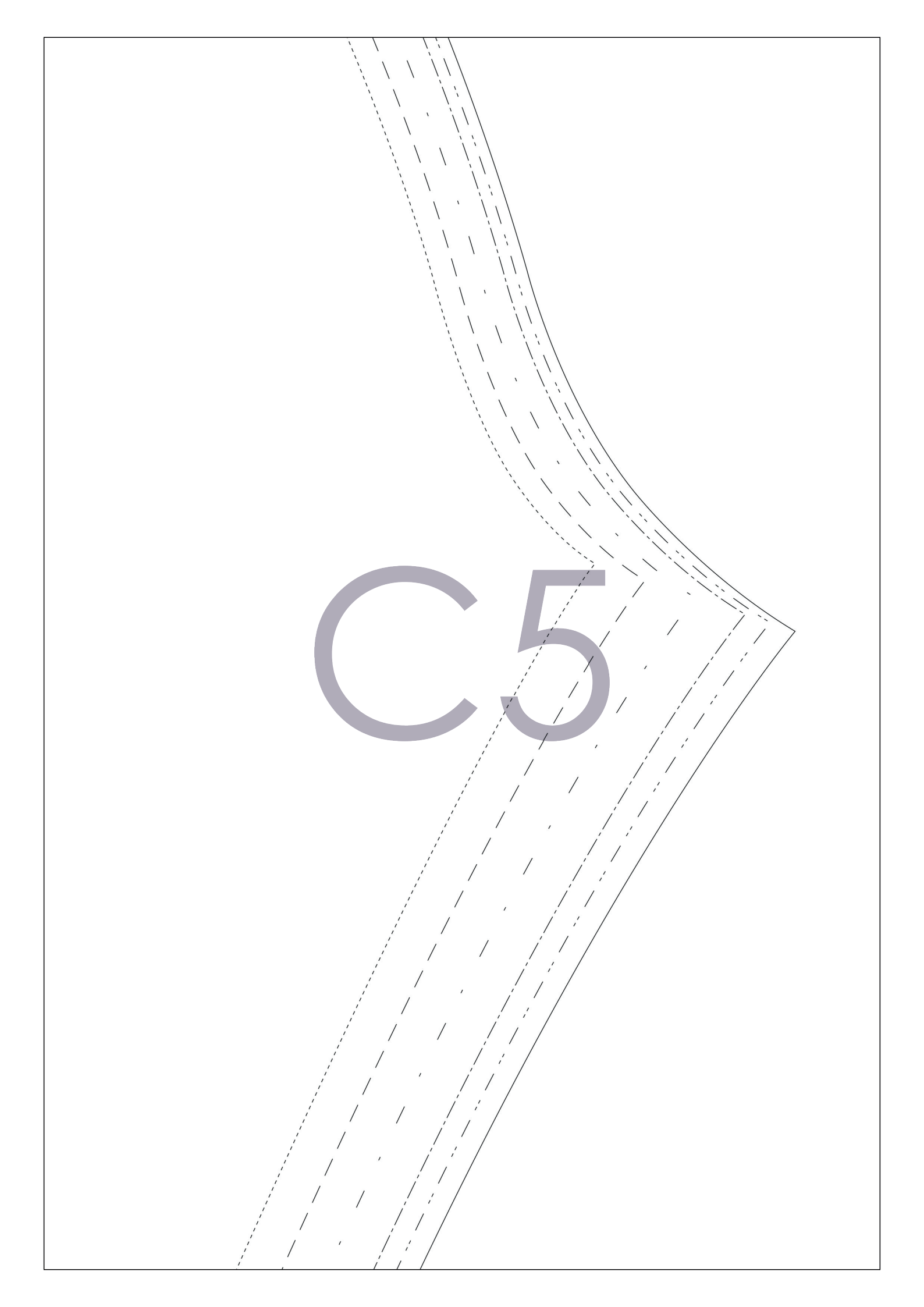
C2

C3



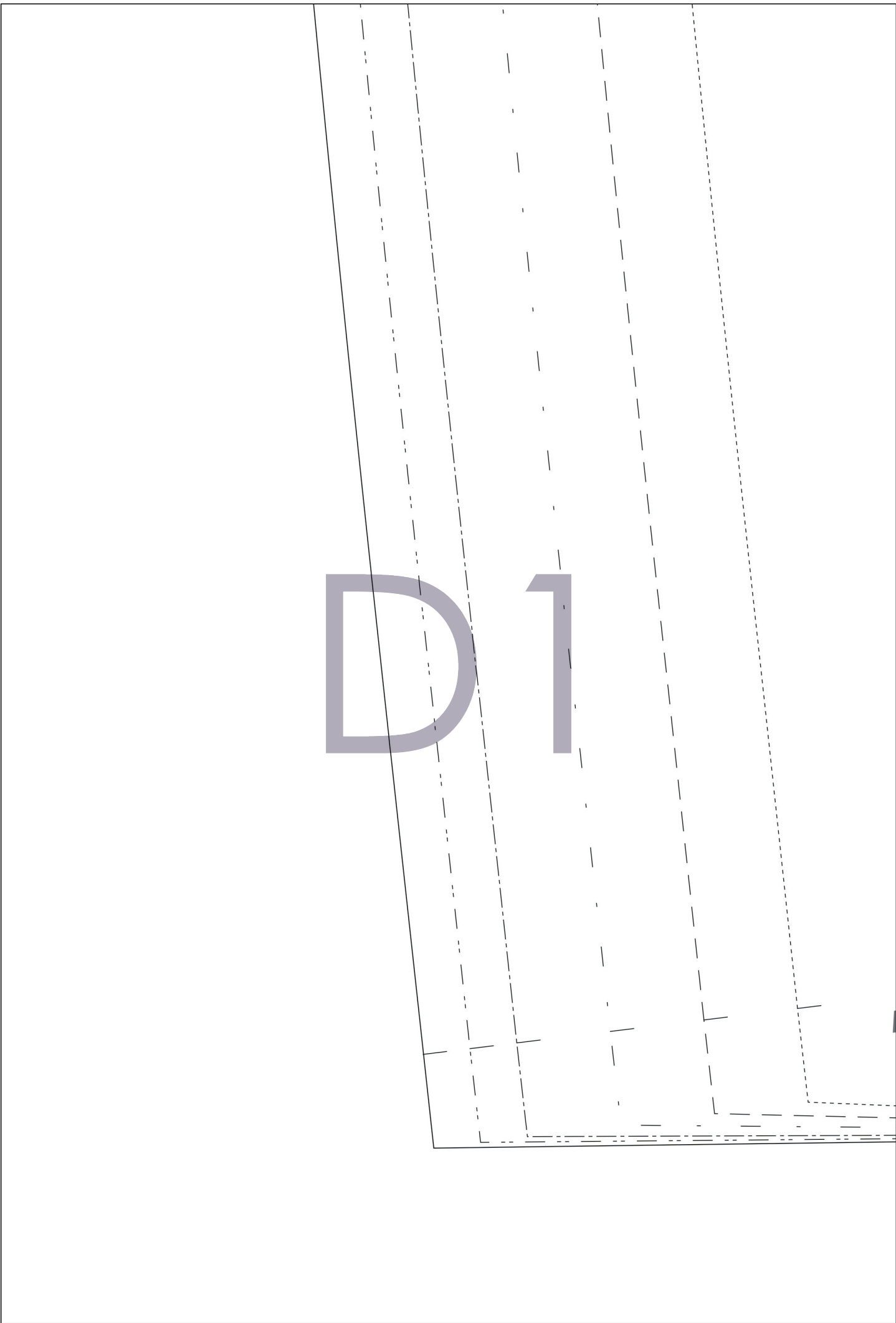
C4
BIRTE DRESS

D



C5

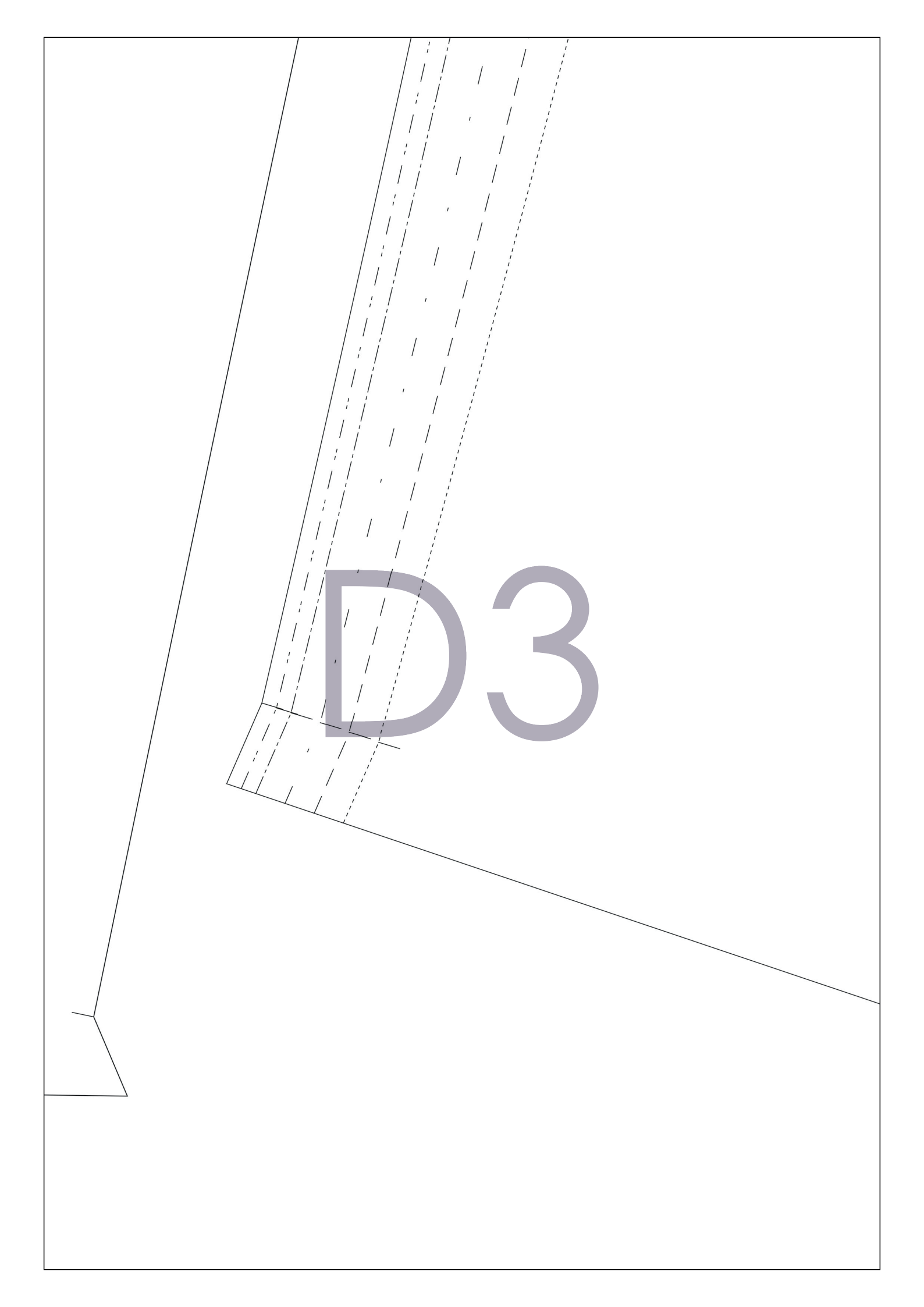
D 1



D2

Hemmers Itex
fabrics for your creativity



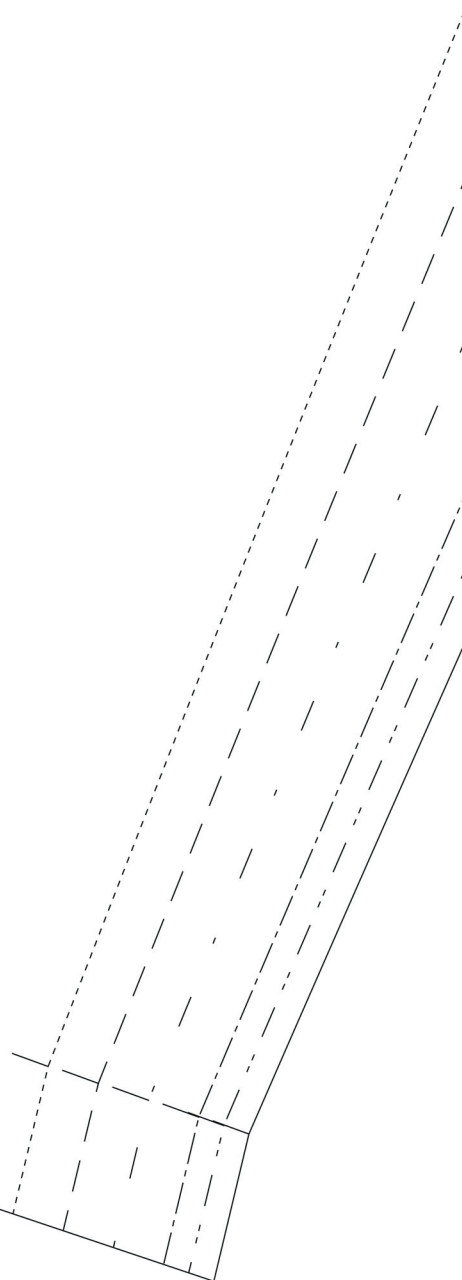


A technical drawing of a trapezoidal object, possibly a mechanical part, shown in a perspective view. The object is oriented vertically, with its top edge being wider than its bottom edge. The drawing uses solid lines for the visible edges and dashed lines for hidden edges. A section of the object is hatched with diagonal lines, indicating a cutaway view. The label 'D3' is prominently displayed in the center of the object in a large, bold, grey font. The entire drawing is enclosed within a rectangular border.

D3

D4

Hemmers Itex
fabrics for your creativity

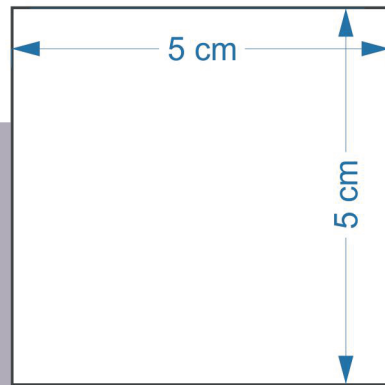


A decorative graphic in the top-left corner of the page, consisting of several parallel lines that fan out from the left edge towards the top-right. The lines include a solid line, a dashed line, and a dotted line, creating a layered, geometric effect.

D5

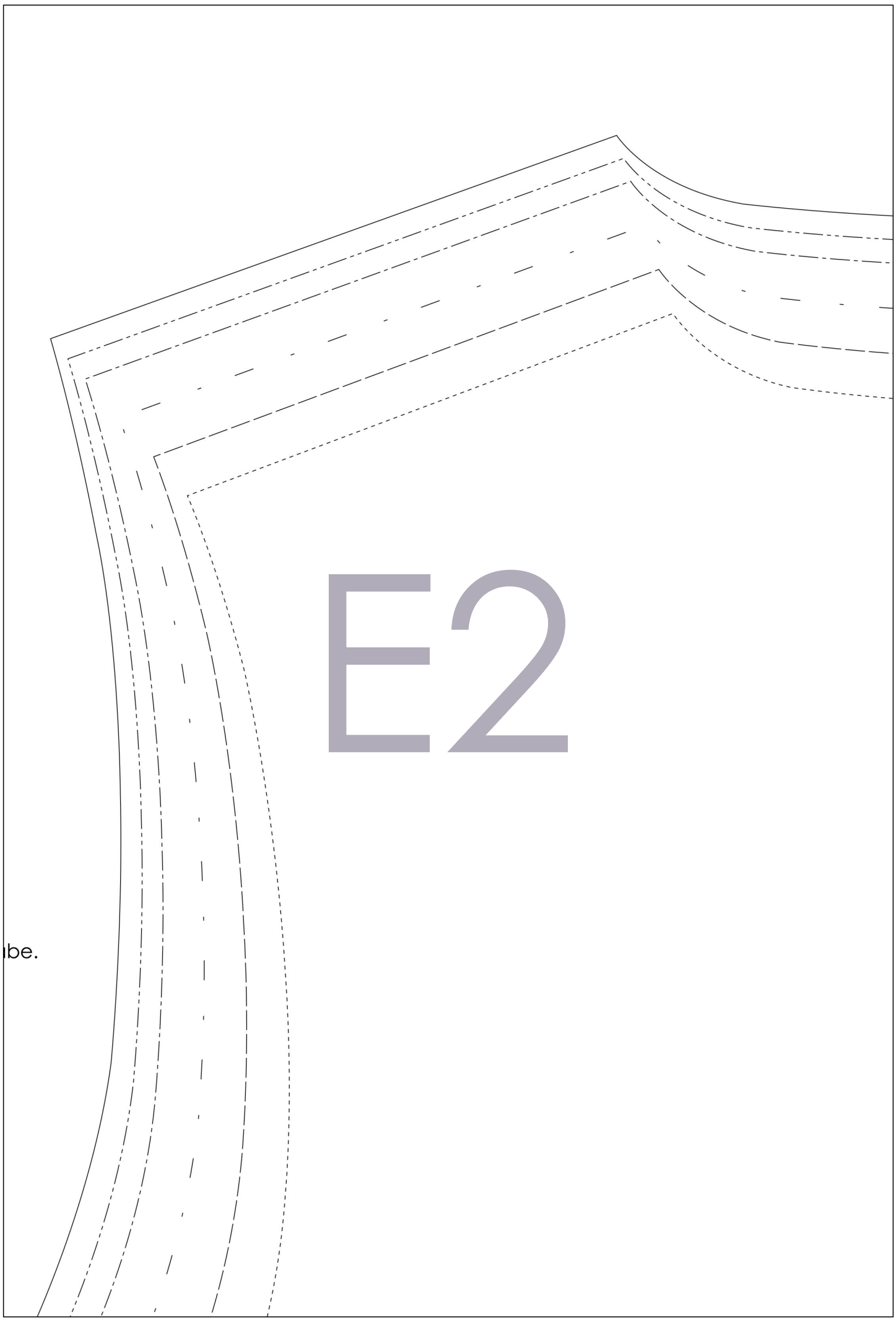
E

1



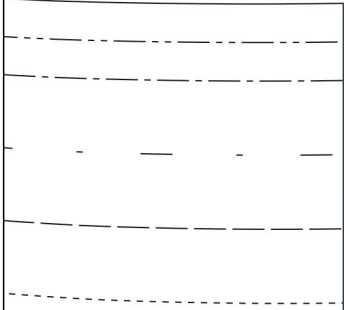
_____	46
.....	44
.....	42
.....	40
.....	38
.....	36

Das Schnittmuster enthält keine Nahtzugabe.
Seam allowance not included.



E2

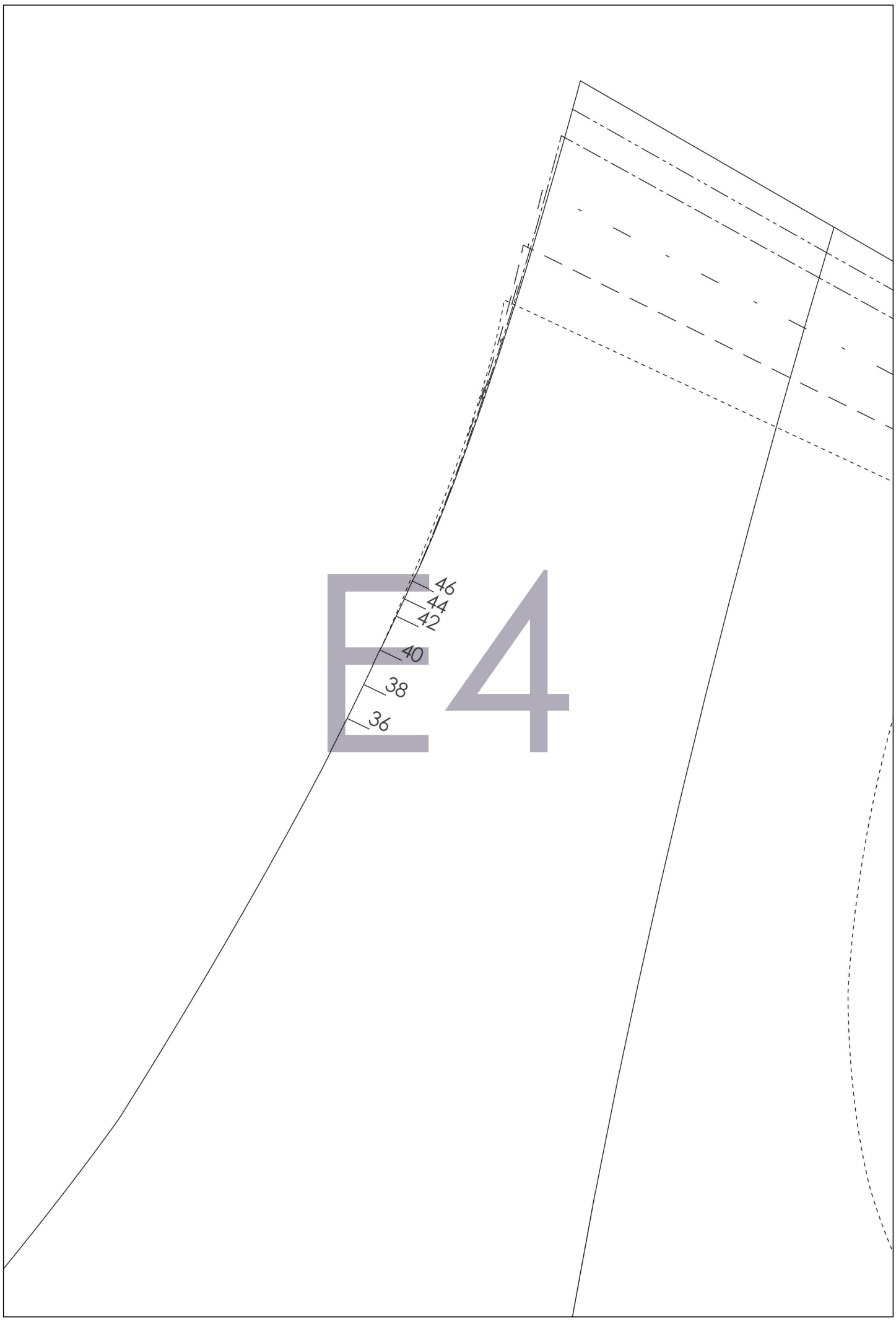
be.

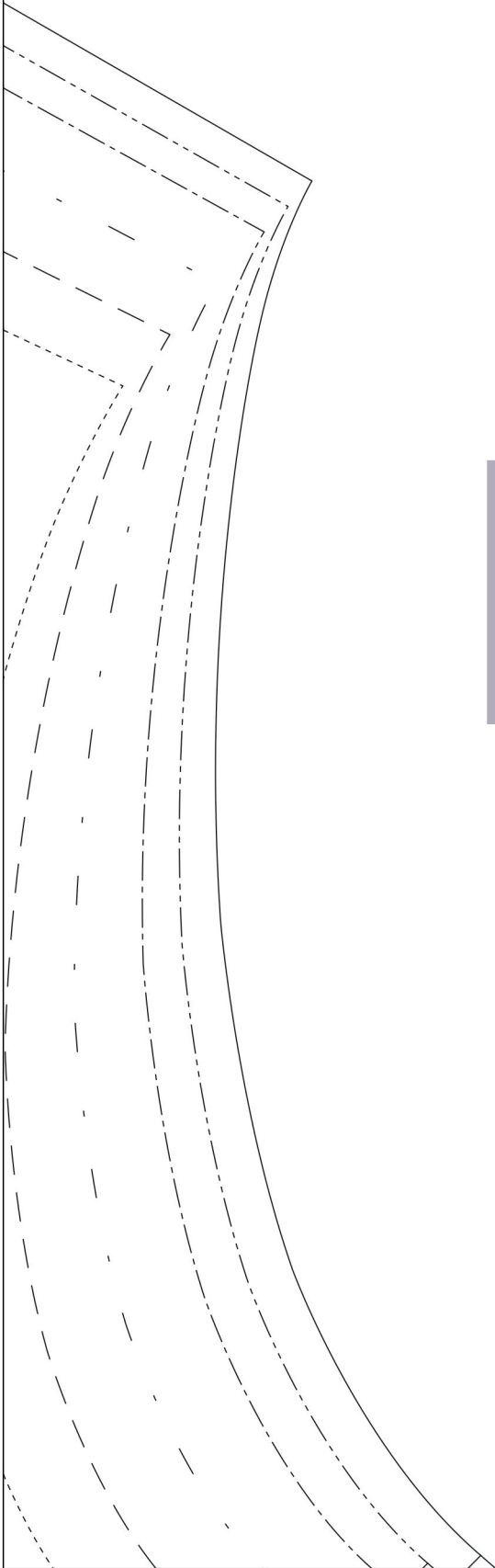


E3

E4

46
44
42
40
38
36

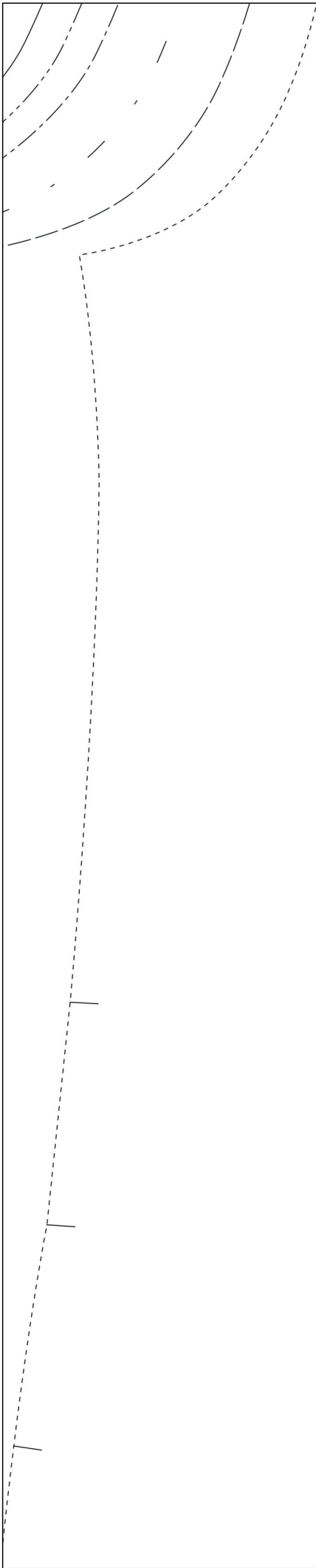




E5

F1





F2 BIRTE DRESS

C

Stoffbruch / Fold

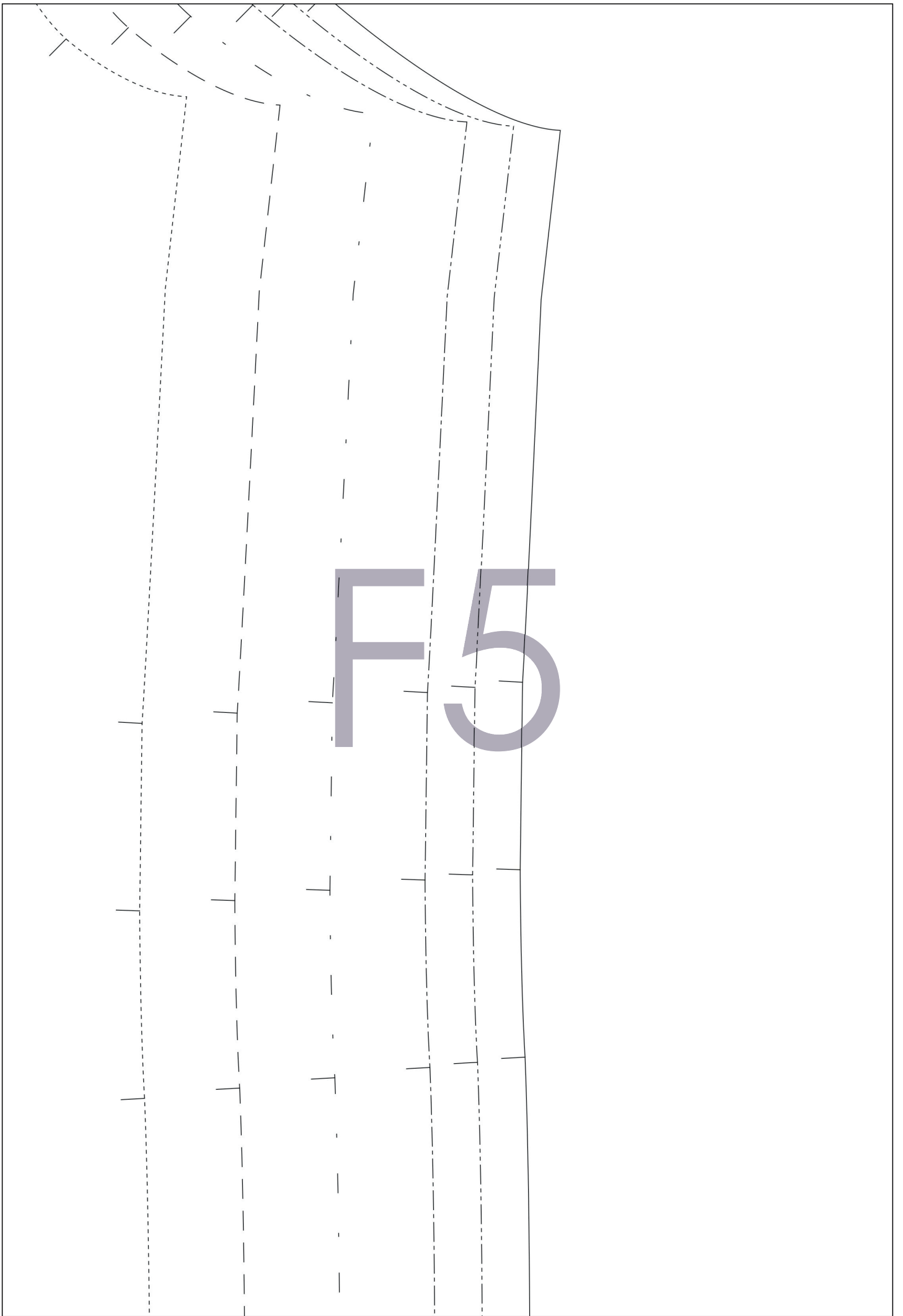
F3

BIRTI

F4

E DRESS

D



G 1

G2

G3

B

G4

G5

Н

1

A handwriting practice grid consisting of six vertical lines. From left to right, the lines are: a solid line, a dashed line, a solid line, a dashed line, a solid line, and a dashed line. At the bottom of the grid, there are six short horizontal tick marks, each aligned with one of the vertical lines.

H2

НЗ

H4

Hemmers Itex
fabrics for your creativity

Н5

